

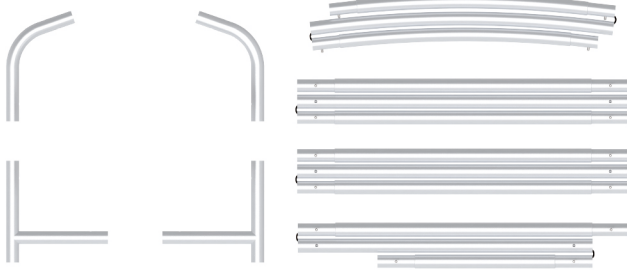
# INSTRUCTION



**10X10FT-BOOTH-05**

## STEPS

## (1) Hardware

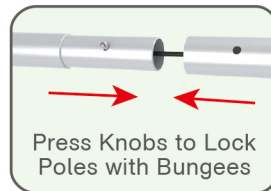


## (2) Printed Graphic Fabric Banner (Optional)



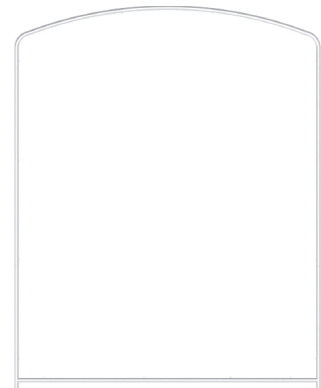
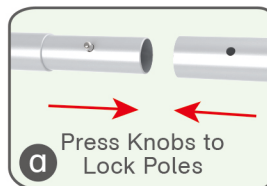
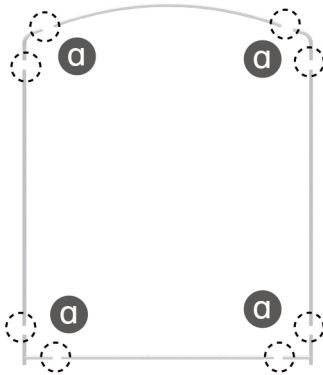
## STEP 01

Connect to make long poles according to labelings.



## STEP 02

Connect long poles with corner poles according to labelings.



## STEP 03

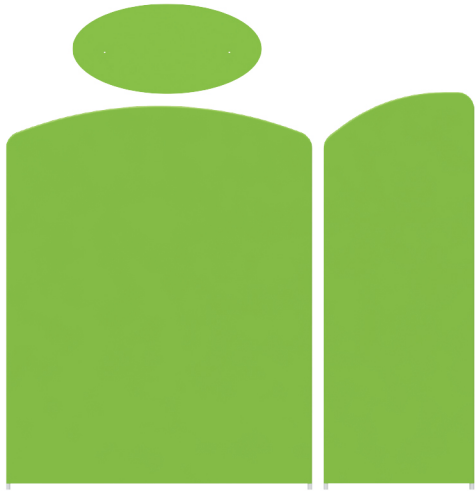
Slide fabric banner on frame from top and zip up at bottom.



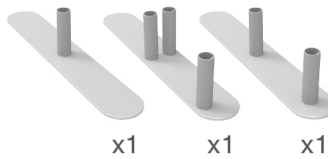
Same Steps for Other Display Stands

## STEPS

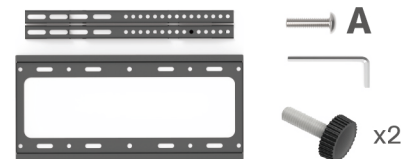
## Booth Set Assembly



(1) Base



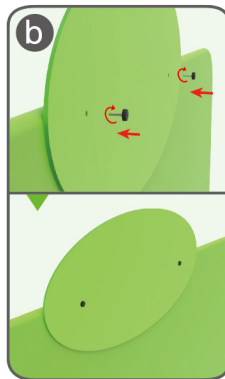
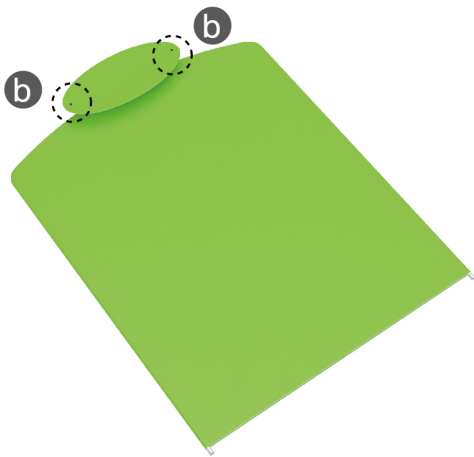
(2) TV Mount &amp; Screw



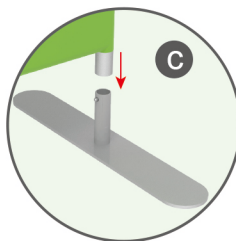
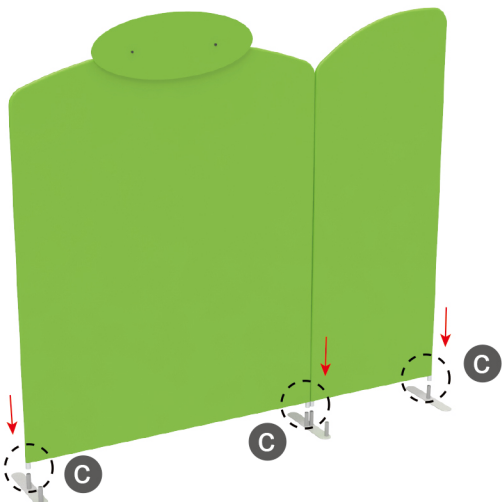
(3) 180° C-Shaped Clip &amp; MDF Board Table (4) LED Light &amp; Clip



**STEP 01** Screw header onto display stand with thumb screws.

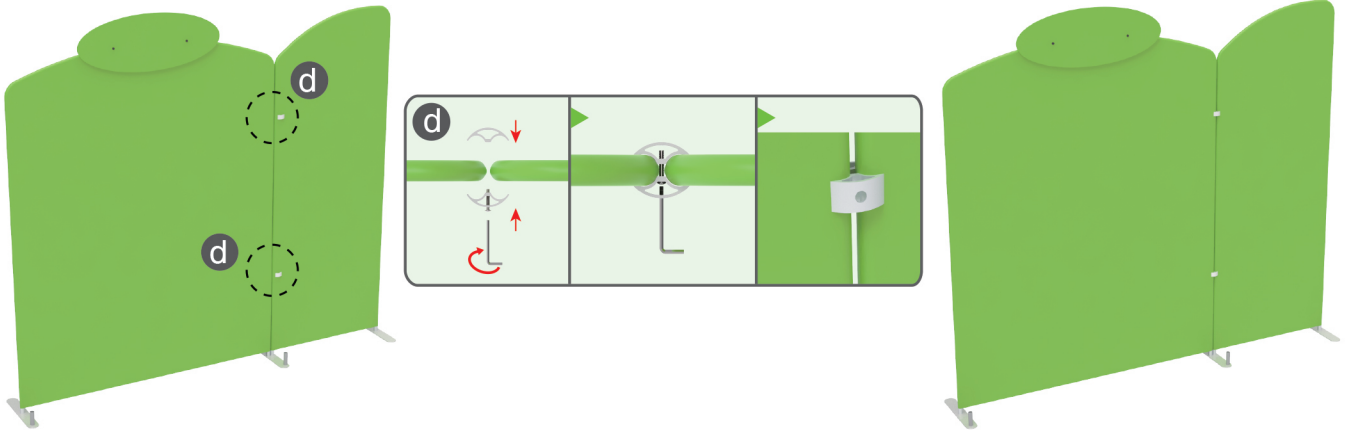


**STEP 02** Insert display stands onto feet by pressing their knobs.

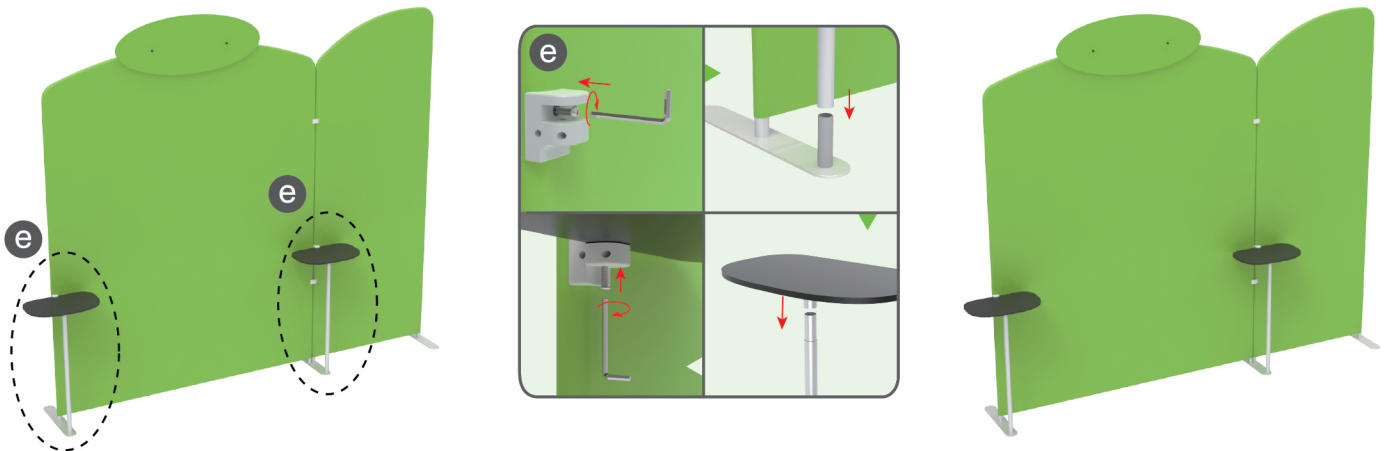


## STEPS

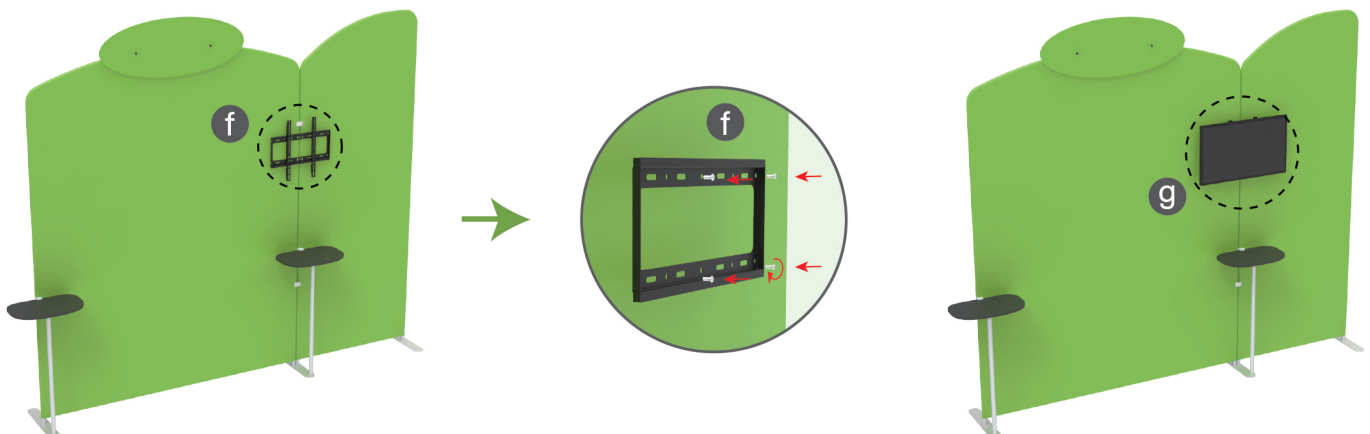
**STEP 03** Interconnect display stands with C-shaped clips.



**STEP 05** Insert pole into base, screw clamp with hex wrench, place MDF board onto pole & insert into clamp with screw.

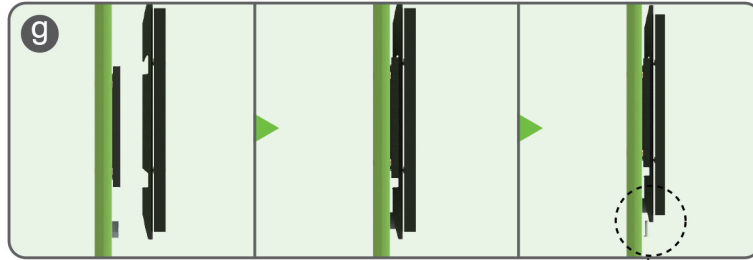
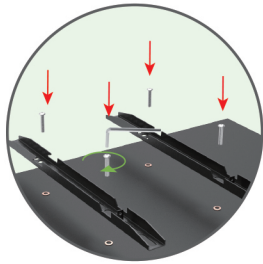


**STEP 06** Screw TV mount with hex wrench.

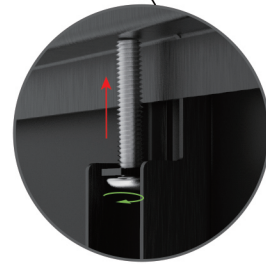




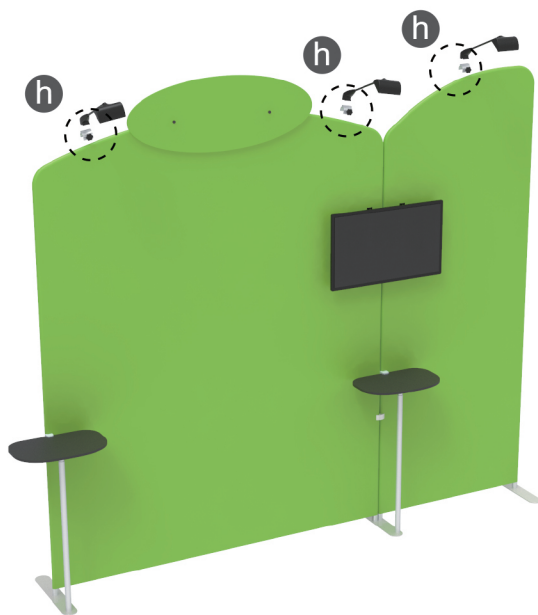
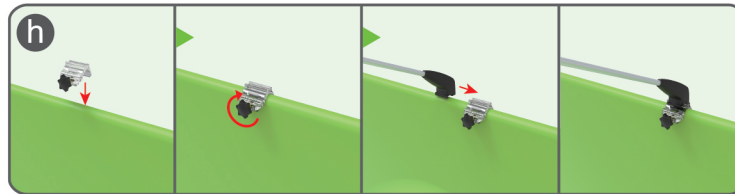
## STEPS



TV (Excluded, Demo Only)

**STEP 06**

Screw light clips at top of display stands, slide lights onto them and adjust their direction.



10X10FT-BOOTH-05

## STEPS

(1) Durable Plastic Hard Case, Aluminum Support Poles

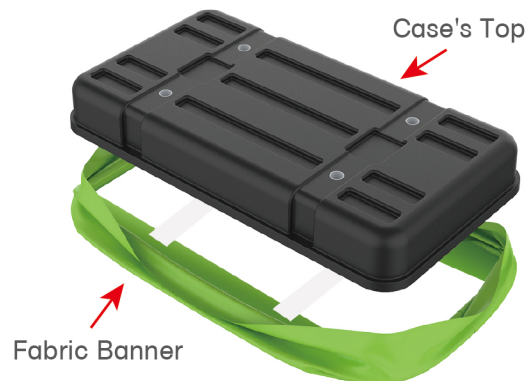


(2) Printed Graphic Fabric Banner



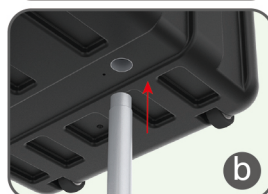
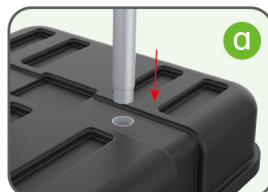
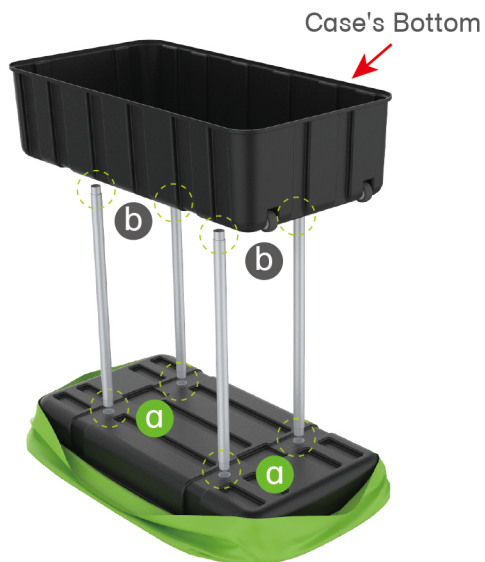
## STEP 01

Put hard case's top into fabric banner.



## STEP 02

Insert support poles into hard case's top &amp; bottom.



## STEPS

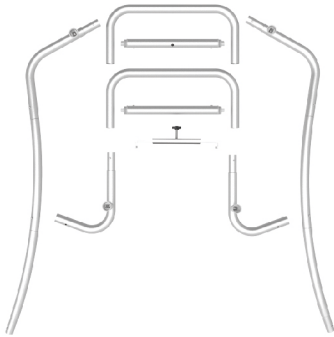
## STEP 04

Wrap fabric banner from bottom to top & twist it to be smooth, lay hard case's intermediate panel on podium's top.



★ One Tool (Hex Wrench) **STEPS**

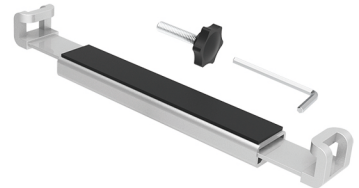
(1) Snap Tubes



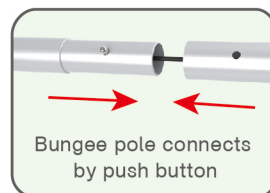
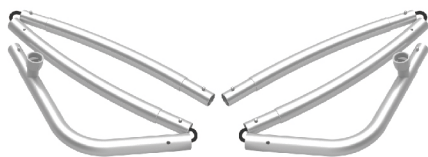
(2) Printed fabric banner



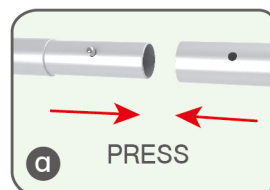
(3) Tablet PC holder

**STEP 01**

To Connect the tubes according to the labellings

**STEP 02**

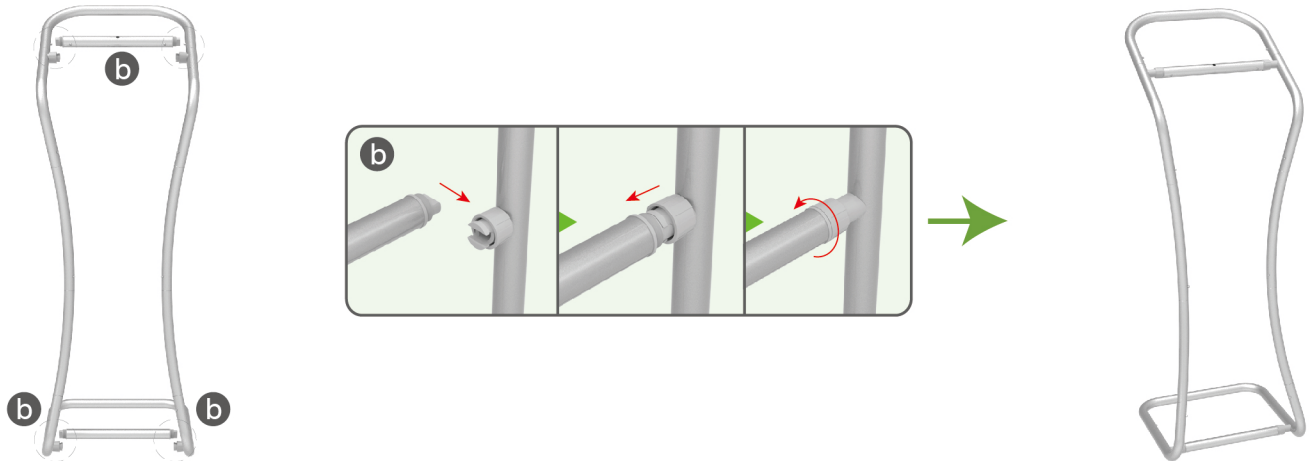
To connect 2 long side tubes by the corner pieces



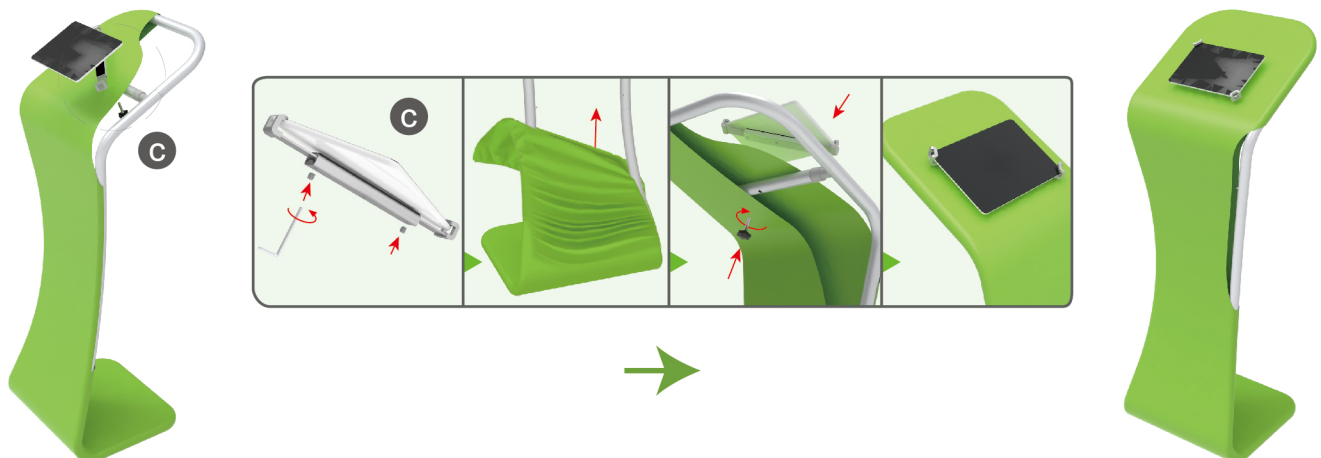


**STEPS****STEP 03**

To install the cross bar according to labellings

**STEP 04**

To wrap the fabric cover from top to bottom and zip to the middle of frame, then put the iPad in the holder and adjust the holder to right size and lock it by Allen Key Afterwards, install the set to the display stand.

**STEP 05**

Zip up completely

